

QAQC assay batch report

Report generated on 21-Dec-2024

Batch Information

Laboratory: ALS_BRI - Despatch #: EDGI_17 - Labjob #: BU24320319 - Return date: 16-Dec-2024

Standards Statistics

Standard	Assay Field	# of Analyses above Threshold	# of Analyses below Threshold	# of Analyses outside Warning	# of Analyses outside Error
AMIS0448	Au_Au_ICP21_ppm	2	0	0	0
CT-22	Au_Au_ICP21_ppm	2	0	0	0
EMOG-17	As_ME_MS61r_ppm	1	0	0	0
EMOG-17	Cu_ME_MS61r_ppm	1	0	0	0
EMOG-17	Nb_ME_MS61r_ppm	1	0	0	0
EMOG-17	Sc_ME_MS61r_ppm	1	0	0	0
EMOG-17	Ti_ME_MS61r_pct	1	0	0	0
GBM321-8	As_ME_MS61r_ppm	2	0	0	0
GBM321-8	Cu_ME_MS61r_ppm	2	0	0	0
GBM321-8	Nb_ME_MS61r_ppm	2	0	0	0
GBM321-8	Sc_ME_MS61r_ppm	2	0	0	0
GBM321-8	Ti_ME_MS61r_pct	2	0	0	0
GPP-14	Au_Au_ICP21_ppm	2	0	0	0
ISA-24	Au_Au_ICP21_ppm	2	0	0	0
MRCA-21	As_ME_MS61r_ppm	2	0	0	0
MRCA-21	Cu_ME_MS61r_ppm	2	0	0	0
MRCA-21	Nb_ME_MS61r_ppm	2	0	0	0
MRCA-21	Sc_ME_MS61r_ppm	2	0	0	0
MRCA-21	Ti_ME_MS61r_pct	2	0	0	0
NCSDC35011	Sn_ME_XRF15b_pct	4	0	0	0
NCSDC35012	Sn_ME_XRF15b_pct	4	0	0	0
OREAS 242	Au_Au_ICP21_ppm	2	0	0	0
OREAS 507	As_ME_MS61r_ppm	2	0	0	0
OREAS 507	Cu_ME_MS61r_ppm	2	0	0	0
OREAS 507	Nb_ME_MS61r_ppm	2	0	0	0
OREAS 507	Sc_ME_MS61r_ppm	2	0	0	0
OREAS 507	Ti_ME_MS61r_pct	2	0	0	0
OREAS 681	Au_Au_ICP21_ppm	2	0	0	0
STD.OR-230	As_ME_MS61r_ppm	1	0	0	0
STD.OR-230	Au_Au_ICP21_ppm	1	0	0	0
STD.OR-230	Cu_ME_MS61r_ppm	1	0	0	0
STD.OR-230	Nb_ME_MS61r_ppm	1	0	0	0
STD.OR-230	Sc_ME_MS61r_ppm	1	0	0	0
STD.OR-230	Ti_ME_MS61r_pct	1	0	0	0
STD.OR-235b	As_ME_MS61r_ppm	1	0	0	0
STD.OR-235b	Au_Au_ICP21_ppm	1	0	0	0
STD.OR-235b	Cu_ME_MS61r_ppm	1	0	0	0
STD.OR-235b	Nb_ME_MS61r_ppm	1	0	0	0
STD.OR-235b	Sc_ME_MS61r_ppm	1	0	0	0
STD.OR-235b	Ti_ME_MS61r_pct	1	0	0	0
STD.OR-46	As_ME_MS61r_ppm	1	0	1	1
STD.OR-46	Au_Au_ICP21_ppm	1	0	1	1

Standards Statistics

Standard	Assay Field	# of Analyses above Threshold	# of Analyses below Threshold	# of Analyses outside Warning	# of Analyses outside Error
STD.OR-46	Cu_ME_MS61r_ppm	1	0	0	0
STD.OR-46	Nb_ME_MS61r_ppm	1	0	0	0
STD.OR-46	Sc_ME_MS61r_ppm	1	0	0	0
STD.OR-46	Ti_ME_MS61r_pct	1	0	0	0
STD.REN05	Sn_ME_XRF15b_pct	1	0	0	0
STD.REN06	Sn_ME_XRF15b_pct	1	0	0	0
STD.REN07	Sn_ME_XRF15b_pct	1	0	0	0

Blanks Statistics

Standard	Assay Field	# of Analyses above Threshold	# of Analyses below Threshold	# of Analyses outside Warning	# of Analyses outside Error
REN_Blank	As_ME_MS61r_ppm	3	0	0	0
REN_Blank	Au_Au_ICP21_ppm	3	0	0	0
REN_Blank	Cu_ME_MS61r_ppm	3	0	0	0
REN_Blank	Nb_ME_MS61r_ppm	3	0	0	0
REN_Blank	Sc_ME_MS61r_ppm	3	0	0	0
REN_Blank	Sn_ME_XRF15b_pct	0	0	0	0
REN_Blank	Ti_ME_MS61r_pct	3	0	0	0

Duplicates/Repeats Statistics

CheckStage	Assay Field	# of Analyses above Threshold	# of Analyses below Threshold	# of Analyses outside Warning	# of Analyses outside Error
I : Instrument/Measurement Stage	As_ME_MS61r_ppm	4	0	1	1
I : Instrument/Measurement Stage	Au_Au_ICP21_ppm	0	2	0	0
I : Instrument/Measurement Stage	Cu_ME_MS61r_ppm	4	0	1	0
I : Instrument/Measurement Stage	Nb_ME_MS61r_ppm	4	0	1	0
I : Instrument/Measurement Stage	Sc_ME_MS61r_ppm	4	0	1	0
I : Instrument/Measurement Stage	Sn_ME_XRF15b_pct	1	1	0	0
I : Instrument/Measurement Stage	Ti_ME_MS61r_pct	4	0	0	0

Standards Analyses

StandardID	Assay Name	Sample ID	Duplicate Number	Assay Value	Expected Value	% Diff	QAQC Status	Import Status
AMIS0448	Au_Au_ICP21_ppm	St21:AMIS0448_24320319	LAB_STD	1.34				Pending
AMIS0448	Au_Au_ICP21_ppm	St24:AMIS0448_24320319	LAB_STD	1.31				Pending
CT-22	Au_Au_ICP21_ppm	St09:CT-22_24320319	LAB_STD	2.59				Pending
CT-22	Au_Au_ICP21_ppm	St12:CT-22_24320319	LAB_STD	2.58				Pending
EMOG-17	As_ME_MS61r_ppm	St16:EMOG-17_24320319	LAB_STD	569				Pending
EMOG-17	Cu_ME_MS61r_ppm	St16:EMOG-17_24320319	LAB_STD	8300				Pending
EMOG-17	Nb_ME_MS61r_ppm	St16:EMOG-17_24320319	LAB_STD	14.4				Pending
EMOG-17	Sc_ME_MS61r_ppm	St16:EMOG-17_24320319	LAB_STD	7.9				Pending
EMOG-17	Ti_ME_MS61r_pct	St16:EMOG-17_24320319	LAB_STD	0.314				Pending
GBM321-8	As_ME_MS61r_ppm	St06:GBM321-8_24320319	LAB_STD	60.7				Pending
GBM321-8	As_ME_MS61r_ppm	St17:GBM321-8_24320319	LAB_STD	52.4				Pending
GBM321-8	Cu_ME_MS61r_ppm	St06:GBM321-8_24320319	LAB_STD	3550				Pending
GBM321-8	Cu_ME_MS61r_ppm	St17:GBM321-8_24320319	LAB_STD	3560				Pending
GBM321-8	Nb_ME_MS61r_ppm	St06:GBM321-8_24320319	LAB_STD	10.7				Pending
GBM321-8	Nb_ME_MS61r_ppm	St17:GBM321-8_24320319	LAB_STD	10.4				Pending
GBM321-8	Sc_ME_MS61r_ppm	St06:GBM321-8_24320319	LAB_STD	19.3				Pending
GBM321-8	Sc_ME_MS61r_ppm	St17:GBM321-8_24320319	LAB_STD	18.1				Pending
GBM321-8	Ti_ME_MS61r_pct	St06:GBM321-8_24320319	LAB_STD	0.663				Pending
GBM321-8	Ti_ME_MS61r_pct	St17:GBM321-8_24320319	LAB_STD	0.655				Pending
GPP-14	Au_Au_ICP21_ppm	St25:GPP-14_24320319	LAB_STD	0.907				Pending
GPP-14	Au_Au_ICP21_ppm	St26:GPP-14_24320319	LAB_STD	0.921				Pending
ISA-24	Au_Au_ICP21_ppm	St03:ISA-24_24320319	LAB_STD	0.317				Pending
ISA-24	Au_Au_ICP21_ppm	St08:ISA-24_24320319	LAB_STD	0.31				Pending
MRCA-21	As_ME_MS61r_ppm	St02:MRCA-21_24320319	LAB_STD	17.4				Pending
MRCA-21	As_ME_MS61r_ppm	St04:MRCA-21_24320319	LAB_STD	18.8				Pending
MRCA-21	Cu_ME_MS61r_ppm	St02:MRCA-21_24320319	LAB_STD	929				Pending
MRCA-21	Cu_ME_MS61r_ppm	St04:MRCA-21_24320319	LAB_STD	954				Pending
MRCA-21	Nb_ME_MS61r_ppm	St02:MRCA-21_24320319	LAB_STD	14.4				Pending
MRCA-21	Nb_ME_MS61r_ppm	St04:MRCA-21_24320319	LAB_STD	15.1				Pending
MRCA-21	Sc_ME_MS61r_ppm	St02:MRCA-21_24320319	LAB_STD	8.9				Pending
MRCA-21	Sc_ME_MS61r_ppm	St04:MRCA-21_24320319	LAB_STD	9.1				Pending
MRCA-21	Ti_ME_MS61r_pct	St02:MRCA-21_24320319	LAB_STD	0.366				Pending
MRCA-21	Ti_ME_MS61r_pct	St04:MRCA-21_24320319	LAB_STD	0.366				Pending
NCSDC35011	Sn_ME_XRF15b_pct	St01:NCSDC35011_24320319	LAB_STD	0.719				Pending
NCSDC35011	Sn_ME_XRF15b_pct	St07:NCSDC35011_24320319	LAB_STD	0.738				Pending
NCSDC35011	Sn_ME_XRF15b_pct	St14:NCSDC35011_24320319	LAB_STD	0.739				Pending
NCSDC35011	Sn_ME_XRF15b_pct	St15:NCSDC35011_24320319	LAB_STD	0.747				Pending
NCSDC35012	Sn_ME_XRF15b_pct	St05:NCSDC35012_24320319	LAB_STD	3.99				Pending
NCSDC35012	Sn_ME_XRF15b_pct	St10:NCSDC35012_24320319	LAB_STD	4.08				Pending
NCSDC35012	Sn_ME_XRF15b_pct	St22:NCSDC35012_24320319	LAB_STD	3.88				Pending
NCSDC35012	Sn_ME_XRF15b_pct	St23:NCSDC35012_24320319	LAB_STD	3.97				Pending
OREAS 242	Au_Au_ICP21_ppm	St18:OREAS 242_24320319	LAB_STD	8.83				Pending
OREAS 242	Au_Au_ICP21_ppm	St27:OREAS 242_24320319	LAB_STD	8.72				Pending
OREAS 507	As_ME_MS61r_ppm	St11:OREAS 507_24320319	LAB_STD	46.8				Pending
OREAS 507	As_ME_MS61r_ppm	St13:OREAS 507_24320319	LAB_STD	45.9				Pending
OREAS 507	Cu_ME_MS61r_ppm	St11:OREAS 507_24320319	LAB_STD	6260				Pending
OREAS 507	Cu_ME_MS61r_ppm	St13:OREAS 507_24320319	LAB_STD	6310				Pending
OREAS 507	Nb_ME_MS61r_ppm	St11:OREAS 507_24320319	LAB_STD	12.8				Pending
OREAS 507	Nb_ME_MS61r_ppm	St13:OREAS 507_24320319	LAB_STD	12.9				Pending
OREAS 507	Sc_ME_MS61r_ppm	St11:OREAS 507_24320319	LAB_STD	7.8				Pending
OREAS 507	Sc_ME_MS61r_ppm	St13:OREAS 507_24320319	LAB_STD	8.6				Pending
OREAS 507	Ti_ME_MS61r_pct	St11:OREAS 507_24320319	LAB_STD	0.359				Pending
OREAS 507	Ti_ME_MS61r_pct	St13:OREAS 507_24320319	LAB_STD	0.351				Pending
OREAS 681	Au_Au_ICP21_ppm	St19:OREAS 681_24320319	LAB_STD	0.052				Pending
OREAS 681	Au_Au_ICP21_ppm	St20:OREAS 681_24320319	LAB_STD	0.051				Pending
STD.OR-230	As_ME_MS61r_ppm	RDD277134	STD	17.1	17.3	-1.16%		Pending
STD.OR-230	Au_Au_ICP21_ppm	RDD277134	STD	0.337	0.337	0.00%		Pending
STD.OR-230	Cu_ME_MS61r_ppm	RDD277134	STD	173.5	169	2.66%		Pending
STD.OR-230	Nb_ME_MS61r_ppm	RDD277134	STD	3.4	3.39	0.29%		Pending
STD.OR-230	Sc_ME_MS61r_ppm	RDD277134	STD	45.2	43.7	3.43%		Pending
STD.OR-230	Ti_ME_MS61r_pct	RDD277134	STD	0.624	0.639	-2.35%		Pending
STD.OR-235b	As_ME_MS61r_ppm	RDD277084	STD	368	353	4.25%		Pending
STD.OR-235b	Au_Au_ICP21_ppm	RDD277084	STD	1.65	1.63	1.23%		Pending
STD.OR-235b	Cu_ME_MS61r_ppm	RDD277084	STD	31.6	29.3	7.85%		Pending
STD.OR-235b	Nb_ME_MS61r_ppm	RDD277084	STD	16.5	15.8	4.43%		Pending
STD.OR-235b	Sc_ME_MS61r_ppm	RDD277084	STD	15.9	14.7	8.16%		Pending
STD.OR-235b	Ti_ME_MS61r_pct	RDD277084	STD	0.506	0.489	3.48%		Pending
STD.OR-46	As_ME_MS61r_ppm	RDD277109	STD	2.4	1.01	137.62%	Error	Pending
STD.OR-46	Au_Au_ICP21_ppm	RDD277109	STD	0.014	0.002	600.00%	Error	Pending
STD.OR-46	Cu_ME_MS61r_ppm	RDD277109	STD	23.6	23.1	2.16%		Pending
STD.OR-46	Nb_ME_MS61r_ppm	RDD277109	STD	4.7	4.56	3.07%		Pending
STD.OR-46	Sc_ME_MS61r_ppm	RDD277109	STD	8.8	8.75	0.57%		Pending
STD.OR-46	Ti_ME_MS61r_pct	RDD277109	STD	0.212	0.207	2.42%		Pending
STD.REN05	Sn_ME_XRF15b_pct	RDD277108	STD	2.7	2.68	0.75%		Pending

Standards Analyses

StandardID	Assay Name	Sample ID	Duplicate Number	Assay Value	Expected Value	% Diff	QAQC Status	Import Status
STD.REN06	Sn_ME_XRF15b_pct	RDD277133	STD	2.57	2.54	1.18%		Pending
STD.REN07	Sn_ME_XRF15b_pct	RDD277083	STD	1.165	1.17	-0.43%		Pending

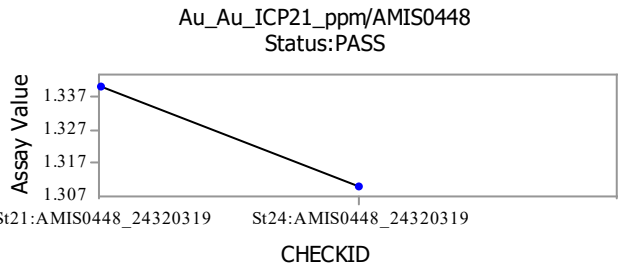
Blanks Analyses

StandardID	Assay Name	Sample ID	Duplicate Number	Assay Value	Expected Value	% Diff	QAQC Status	Import Status
REN_Blank	As_ME_MS61r_ppm	RDD277077	BLK	0.7				Pending
REN_Blank	As_ME_MS61r_ppm	RDD277094	BLK	0.7				Pending
REN_Blank	As_ME_MS61r_ppm	RDD277118	BLK	1.4				Pending
REN_Blank	Au_Au_ICP21_ppm	RDD277077	BLK	0.002				Pending
REN_Blank	Au_Au_ICP21_ppm	RDD277094	BLK	0.001				Pending
REN_Blank	Au_Au_ICP21_ppm	RDD277118	BLK	0.001				Pending
REN_Blank	Cu_ME_MS61r_ppm	RDD277077	BLK	3				Pending
REN_Blank	Cu_ME_MS61r_ppm	RDD277094	BLK	3.4				Pending
REN_Blank	Cu_ME_MS61r_ppm	RDD277118	BLK	2.5				Pending
REN_Blank	Nb_ME_MS61r_ppm	RDD277077	BLK	1.3				Pending
REN_Blank	Nb_ME_MS61r_ppm	RDD277094	BLK	1.3				Pending
REN_Blank	Nb_ME_MS61r_ppm	RDD277118	BLK	1.5				Pending
REN_Blank	Sc_ME_MS61r_ppm	RDD277077	BLK	0.2				Pending
REN_Blank	Sc_ME_MS61r_ppm	RDD277094	BLK	0.2				Pending
REN_Blank	Sc_ME_MS61r_ppm	RDD277118	BLK	0.3				Pending
REN_Blank	Ti_ME_MS61r_pct	RDD277077	BLK	0.056				Pending
REN_Blank	Ti_ME_MS61r_pct	RDD277094	BLK	0.053				Pending
REN_Blank	Ti_ME_MS61r_pct	RDD277118	BLK	0.065				Pending

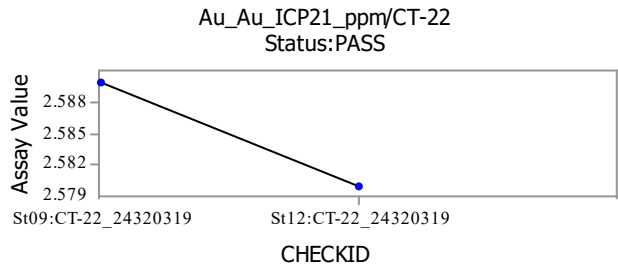
Duplicates/Repeats Analyses

Check Stage	Assay Name	Sample ID	Assay Value	Check ID	Duplicate Number	Check Value	MAPD	QAQC Status	Import Status
I	As_ME_MS61r_ppm	RDD277068	10.1	Ch:RDD277068	EDGI_17	10	1.00%		Pending
I	As_ME_MS61r_ppm	RDD277105	45.9	Ch:RDD277105	EDGI_17	45.8	0.22%		Pending
I	As_ME_MS61r_ppm	RDD277107	14.1	Ch:RDD277107	EDGI_17	14.2	0.71%		Pending
I	As_ME_MS61r_ppm	RDD277143	20.8	Ch:RDD277143	EDGI_17	15.9	26.70%	Error	Pending
I	Au_Au_ICP21_ppm	RDD277078	0.001	Ch:RDD277078	EDGI_17	0.002			Pending
I	Au_Au_ICP21_ppm	RDD277089	0.002	Ch:RDD277089	EDGI_17	0.002			Pending
I	Cu_ME_MS61r_ppm	RDD277068	109.5	Ch:RDD277068	EDGI_17	107.5	1.84%		Pending
I	Cu_ME_MS61r_ppm	RDD277105	33	Ch:RDD277105	EDGI_17	31.8	3.70%		Pending
I	Cu_ME_MS61r_ppm	RDD277107	92	Ch:RDD277107	EDGI_17	94.4	2.58%		Pending
I	Cu_ME_MS61r_ppm	RDD277143	25.1	Ch:RDD277143	EDGI_17	23.4	7.01%	Warning	Pending
I	Nb_ME_MS61r_ppm	RDD277068	23.8	Ch:RDD277068	EDGI_17	23.4	1.69%		Pending
I	Nb_ME_MS61r_ppm	RDD277105	19.6	Ch:RDD277105	EDGI_17	19.3	1.54%		Pending
I	Nb_ME_MS61r_ppm	RDD277107	16.4	Ch:RDD277107	EDGI_17	16.8	2.41%		Pending
I	Nb_ME_MS61r_ppm	RDD277143	25.9	Ch:RDD277143	EDGI_17	24.1	7.20%	Warning	Pending
I	Sc_ME_MS61r_ppm	RDD277068	38.2	Ch:RDD277068	EDGI_17	36.5	4.55%		Pending
I	Sc_ME_MS61r_ppm	RDD277105	31.7	Ch:RDD277105	EDGI_17	31.4	0.95%		Pending
I	Sc_ME_MS61r_ppm	RDD277107	29.9	Ch:RDD277107	EDGI_17	30.3	1.33%		Pending
I	Sc_ME_MS61r_ppm	RDD277143	29.1	Ch:RDD277143	EDGI_17	27.5	5.65%	Warning	Pending
I	Sn_ME_XRF15b_pct	RDD277089	0.017	Ch:RDD277089	EDGI_17	0.018			Pending
I	Sn_ME_XRF15b_pct	RDD277133	2.57	Ch:RDD277133	EDGI_17	2.55	0.78%		Pending
I	Ti_ME_MS61r_pct	RDD277068	1.7	Ch:RDD277068	EDGI_17	1.68	1.18%		Pending
I	Ti_ME_MS61r_pct	RDD277105	1.415	Ch:RDD277105	EDGI_17	1.415			Pending
I	Ti_ME_MS61r_pct	RDD277107	1.225	Ch:RDD277107	EDGI_17	1.235	0.81%		Pending
I	Ti_ME_MS61r_pct	RDD277143	1.365	Ch:RDD277143	EDGI_17	1.325	2.97%		Pending

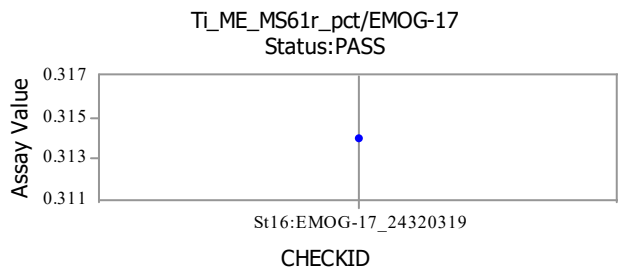
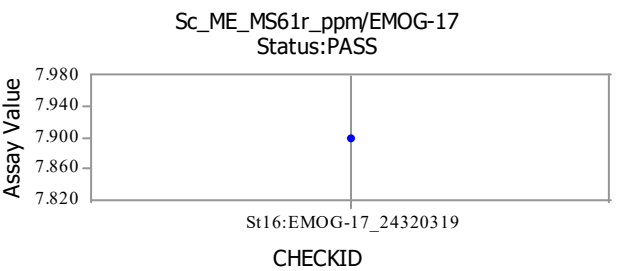
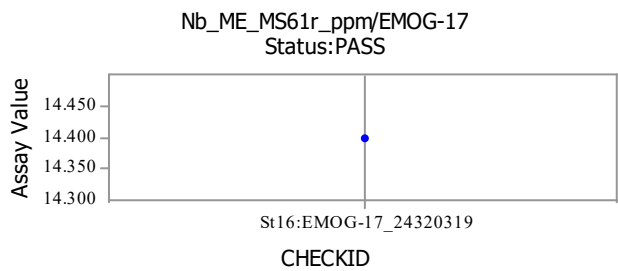
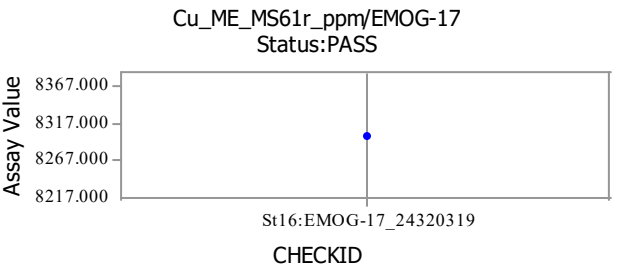
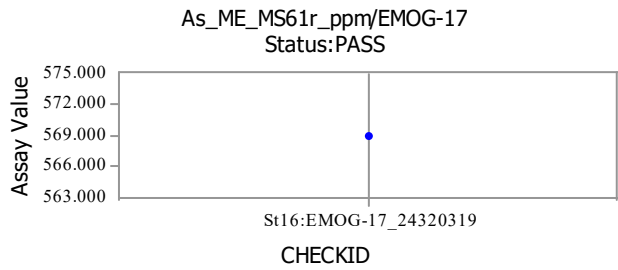
Standard: AMIS0448



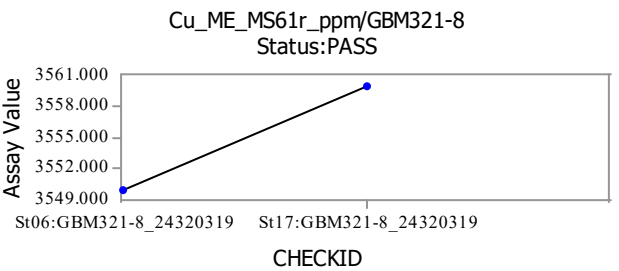
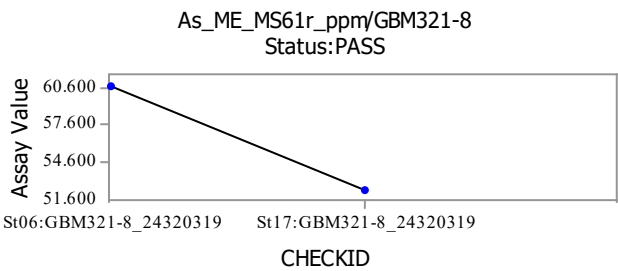
Standard: CT-22

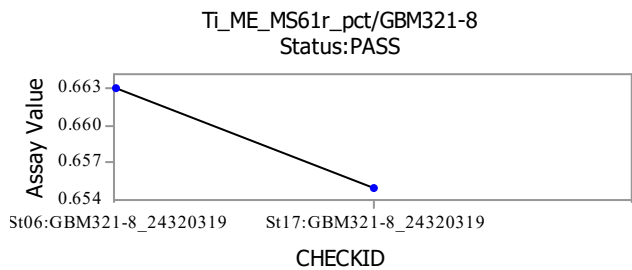
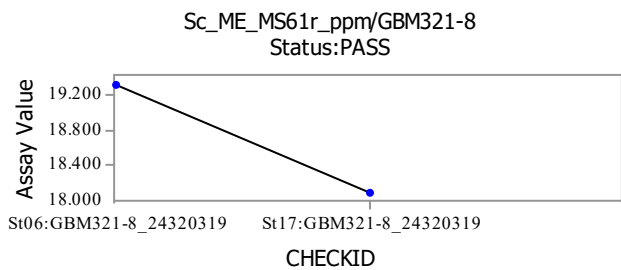
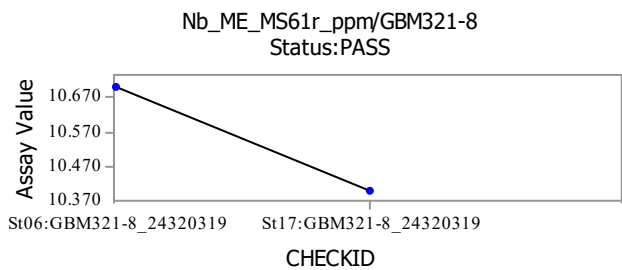


Standard: EMOG-17

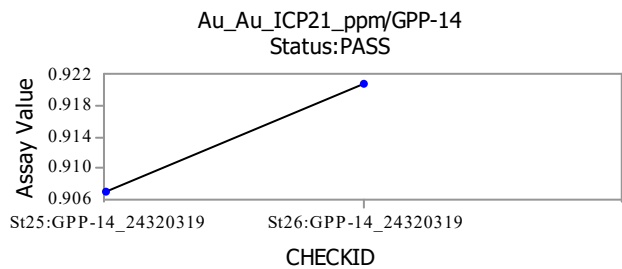


Standard: GBM321-8

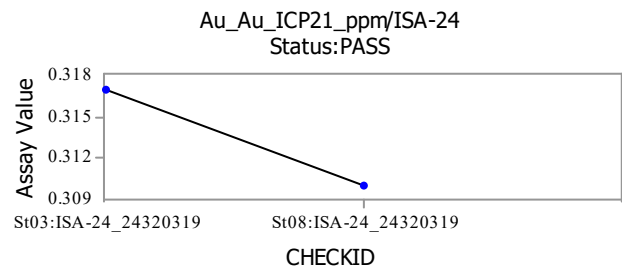




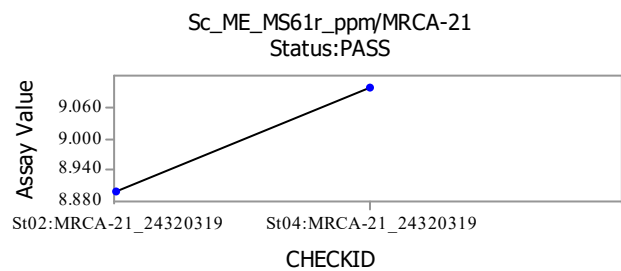
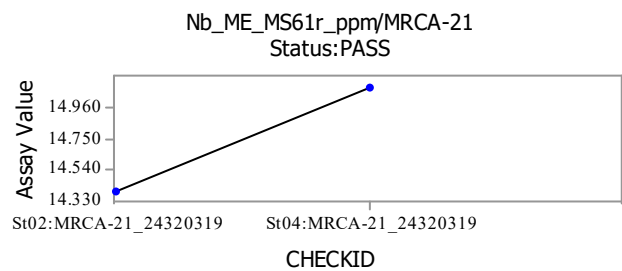
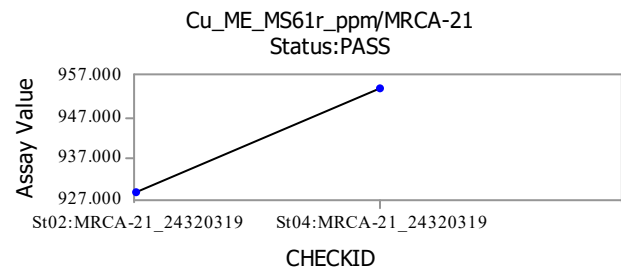
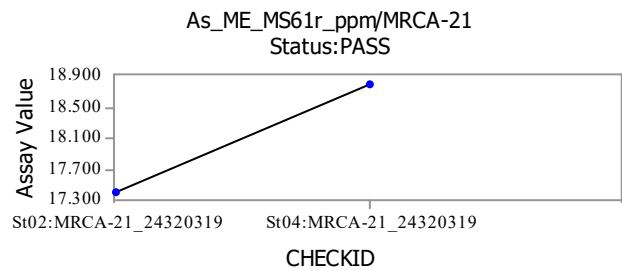
Standard: GPP-14

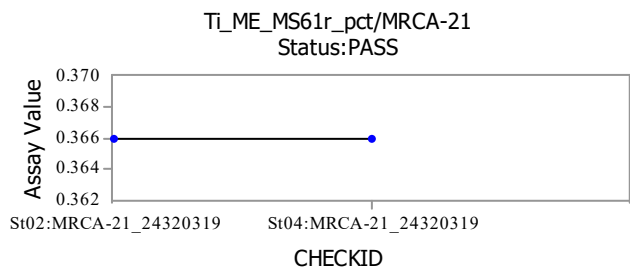


Standard: ISA-24

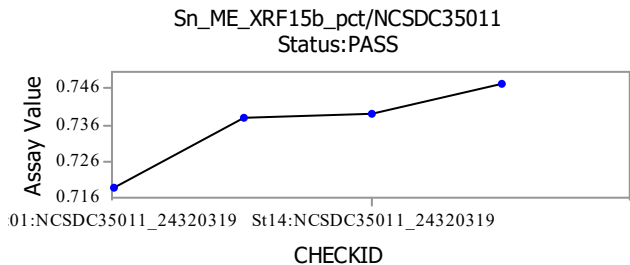


Standard: MRCA-21

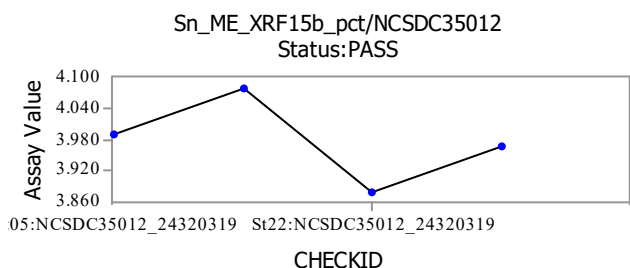




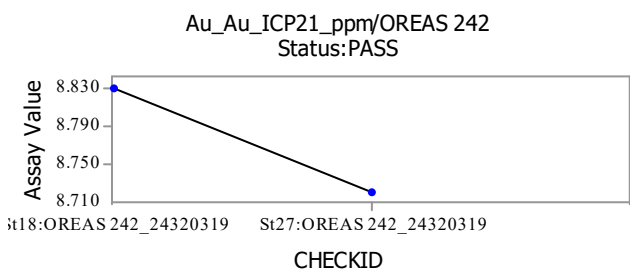
Standard: NCSDC35011



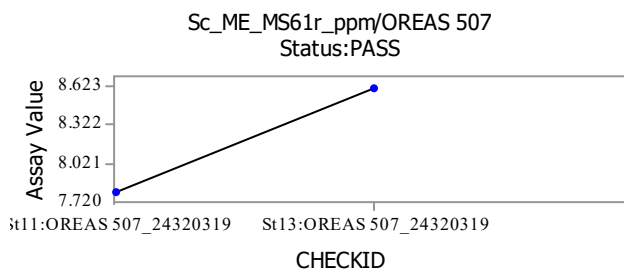
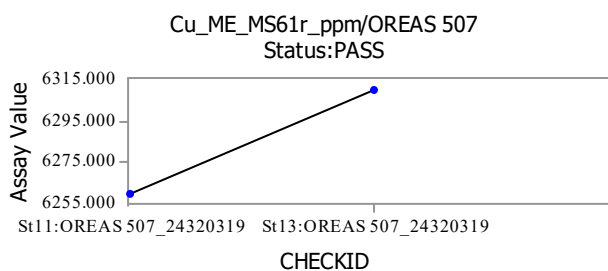
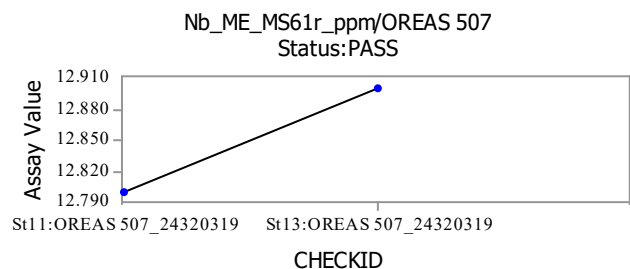
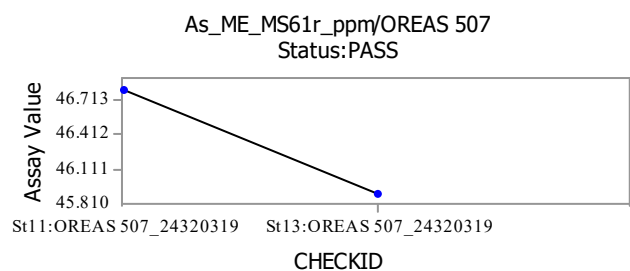
Standard: NCSDC35012

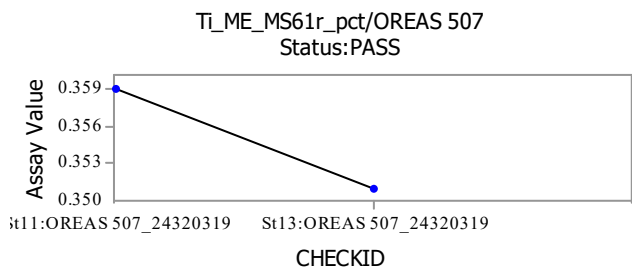


Standard: OREAS 242

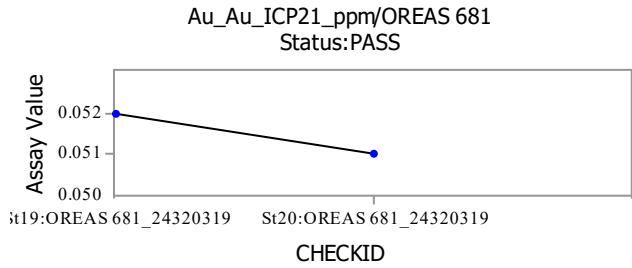


Standard: OREAS 507

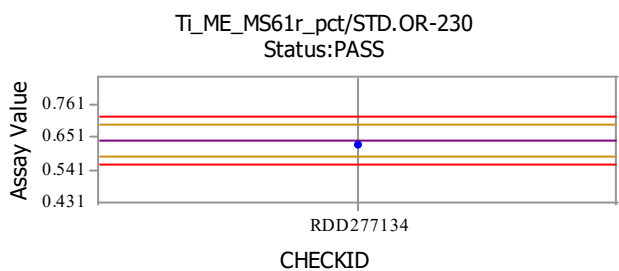
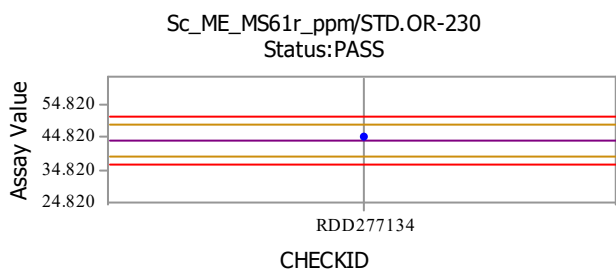
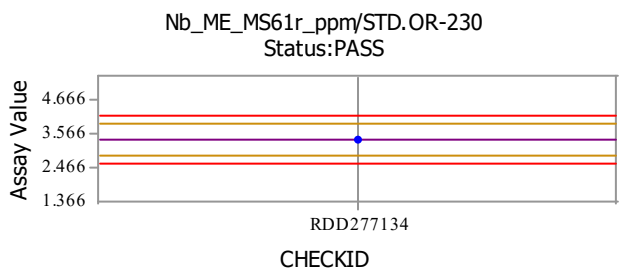
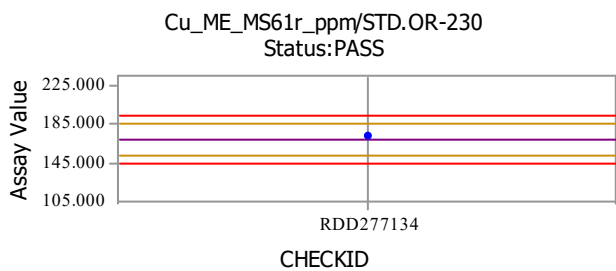
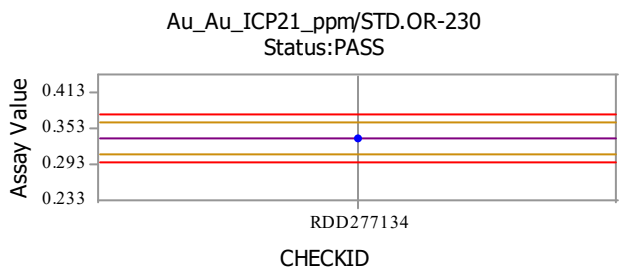
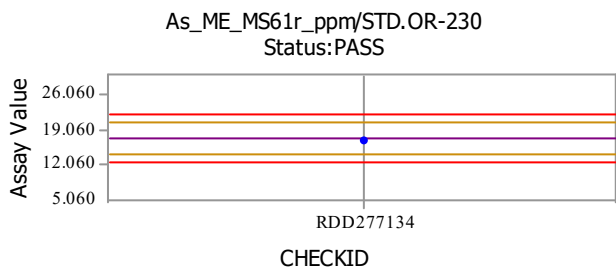




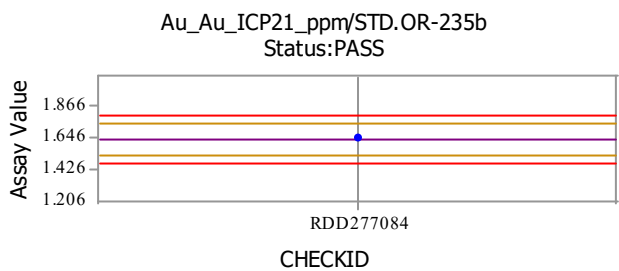
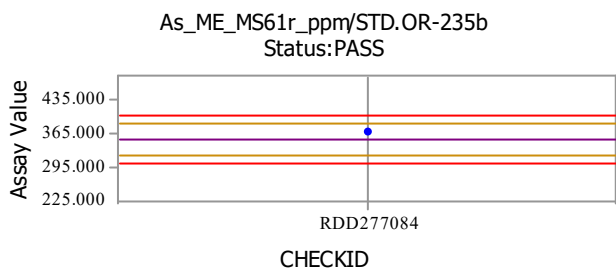
Standard: OREAS 681

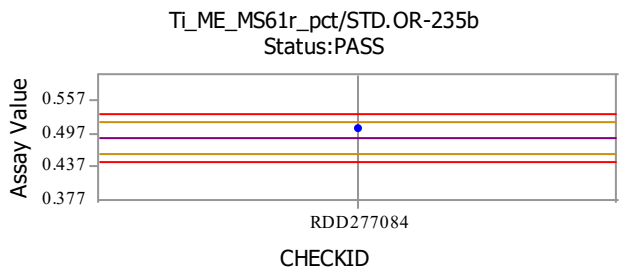
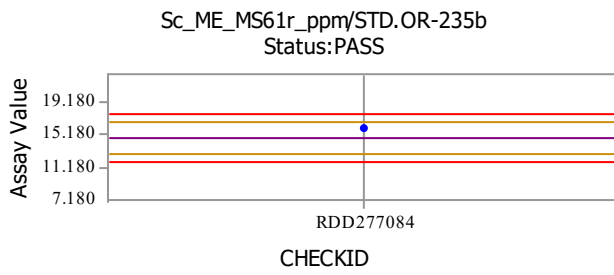
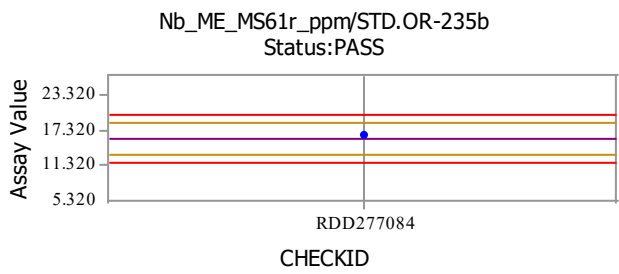
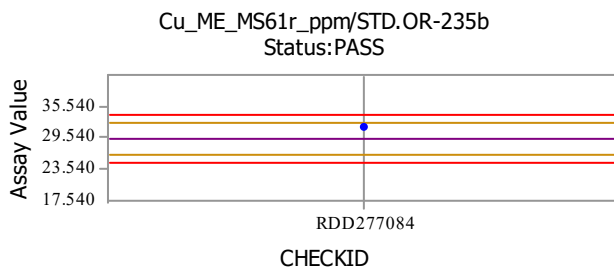


Standard: STD.OR-230

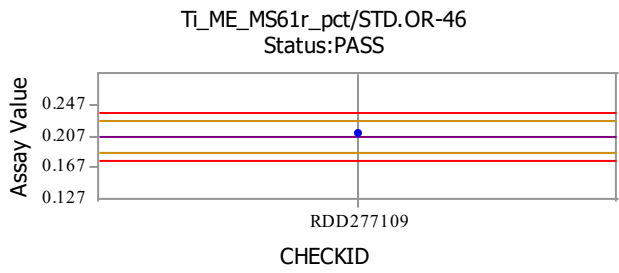
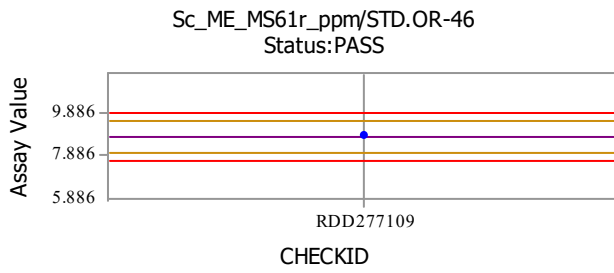
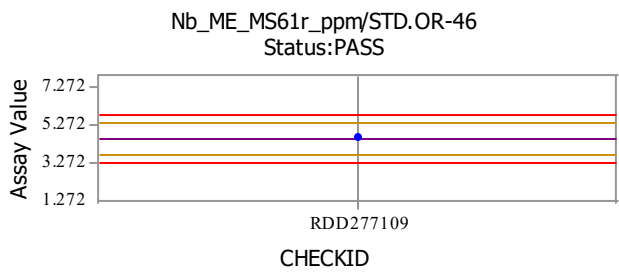
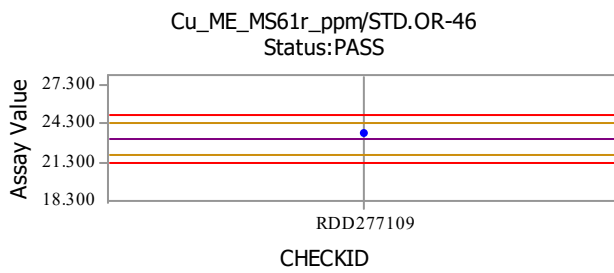
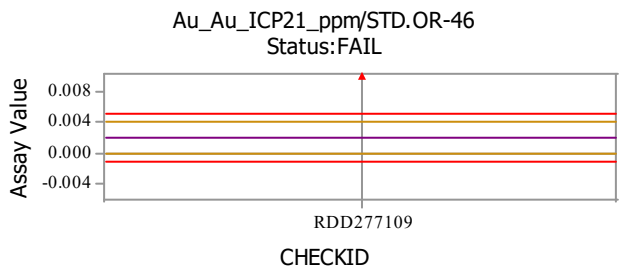
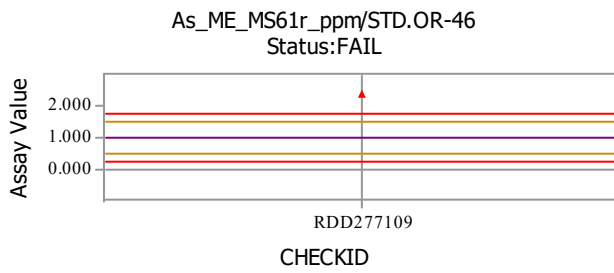


Standard: STD.OR-235b

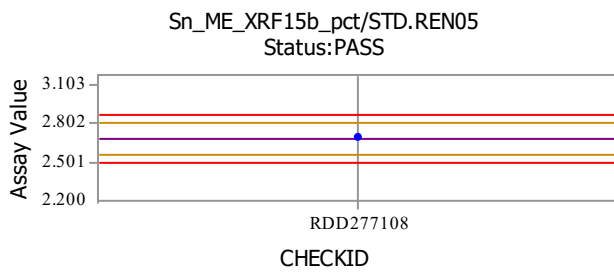




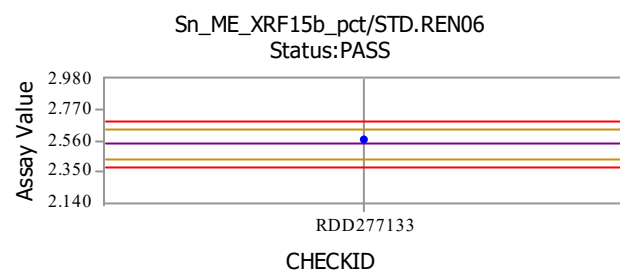
Standard: STD.OR-46



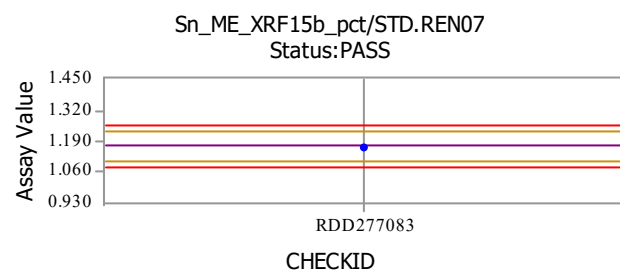
Standard: STD.REN05



Standard: STD.REN06



Standard: STD.REN07

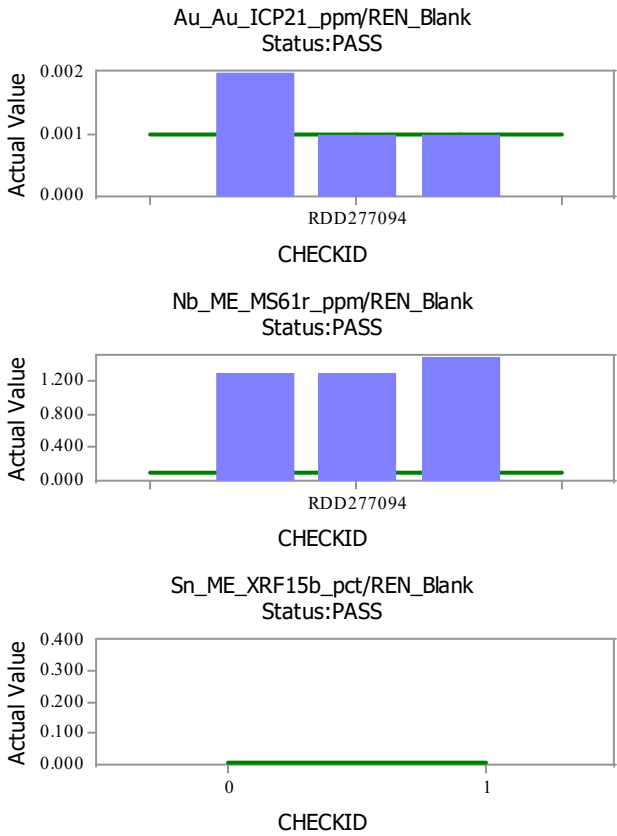
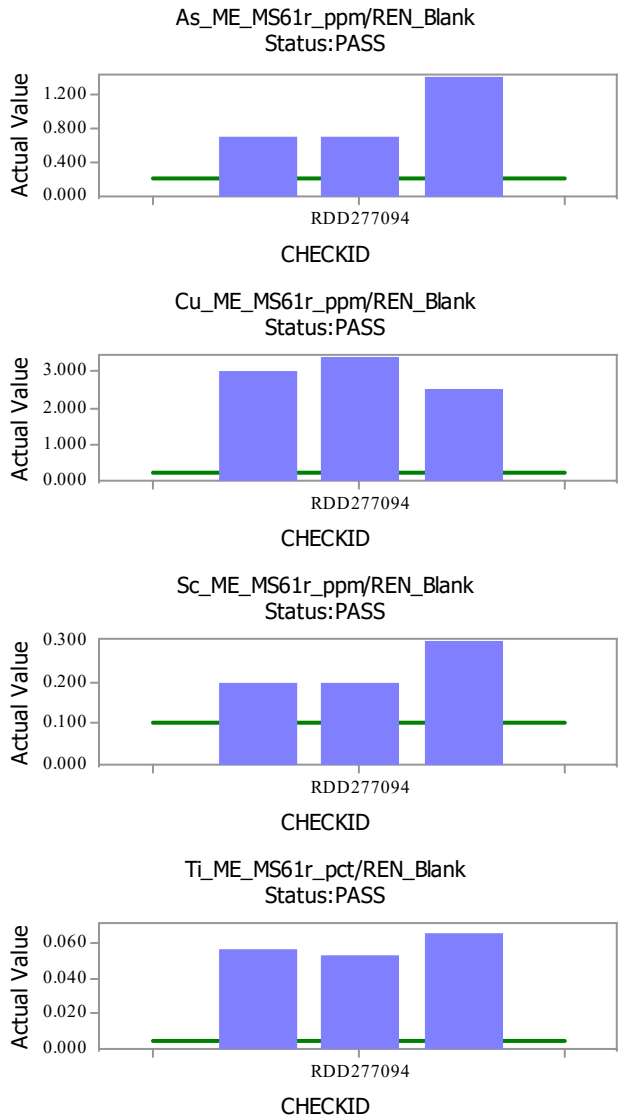


Standards Legend

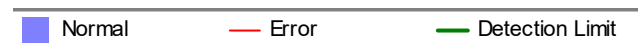
— Expected Value	— Warning
— Error	+ Threshold
▲ Error	▼ Warning
● Normal	

Blank: ALS_BLANK

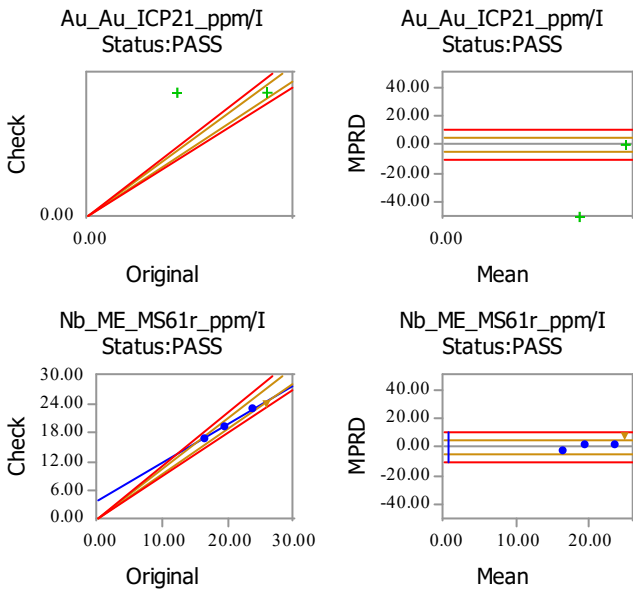
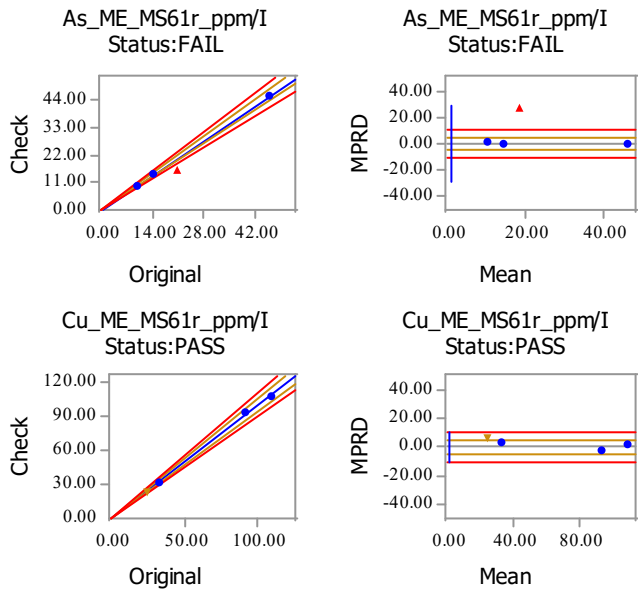
Blank: REN_Blank

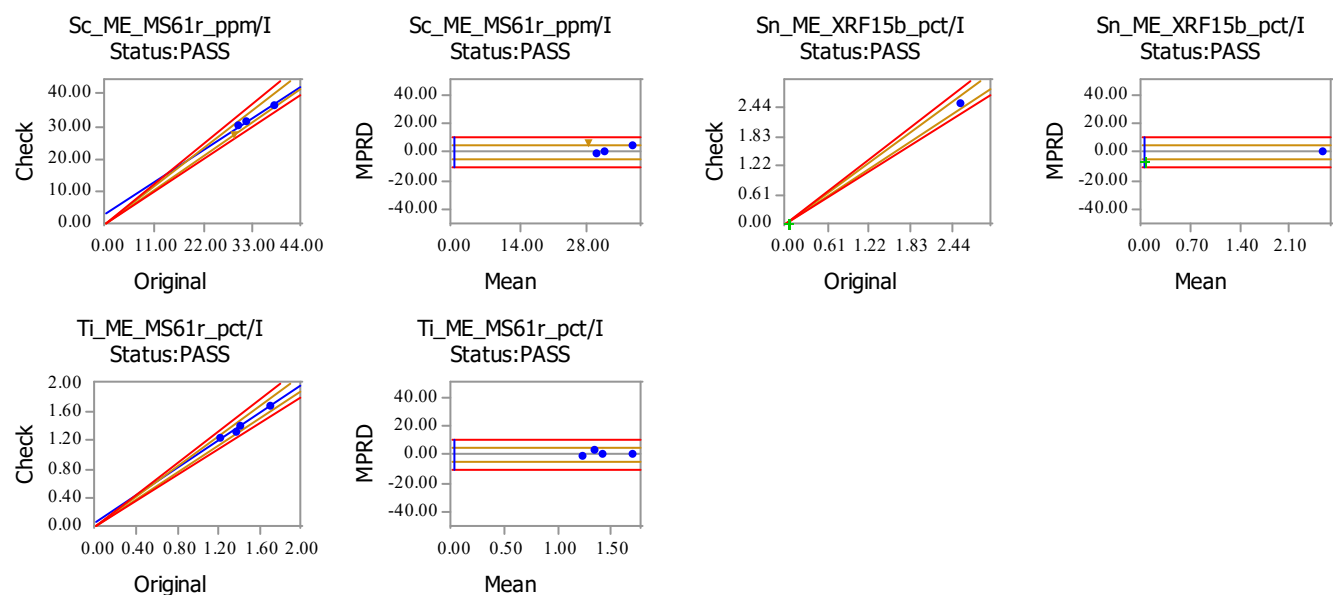


Blanks Legend



CheckStage: I





Duplicates Legend

-
- | | |
|------------------|-------------|
| — OLS Regression | — Warning |
| — Error | + Threshold |
| ● Normal | ▼ Warning |
| ▲ Error | |